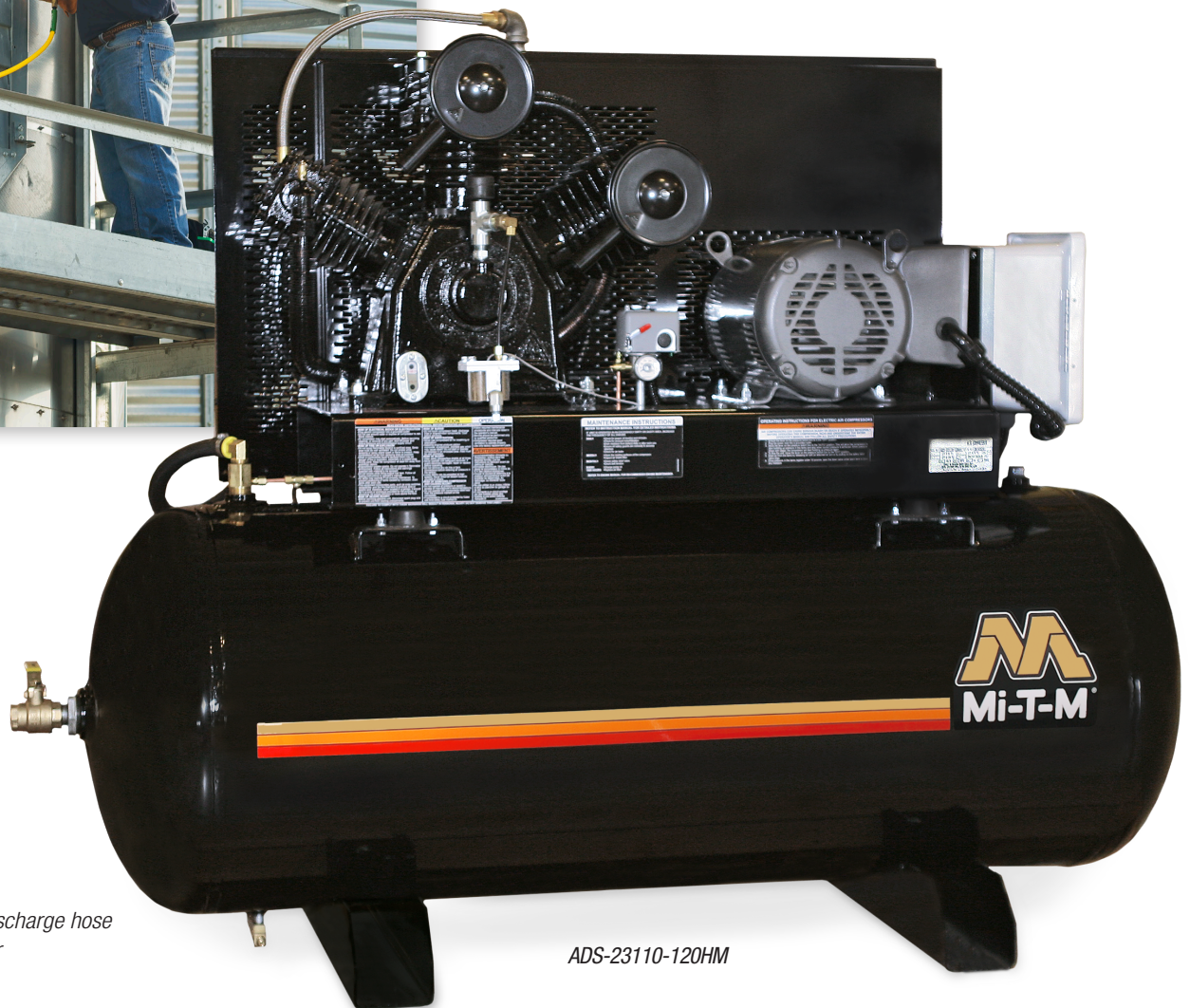


M Series Simplex | Two Stage Electric

80 & 120-Gallon Horizontal & Vertical



Loaded with standard features, the M Series air compressors are available in many motor configurations. Offered with vertical or horizontal tank options, this series comes complete to meet the most demanding industrial applications.



ADS-23110-120HM

Compressor Pump

- Two stage cast iron
- Splash lubricated
- Stainless-steel braided discharge hose
- Large canister intake filter
- Oil level sight indicator

Motor

- Industrial low RPM motor
- Magnetic start for thermal overload protection

Frame

- Powder coated ASME coded 80 or 120-gallon receiver tank
- 3/16-inch base plate to reduce vibration
- Totally enclosed powder coated heavy-duty belt guard

Components

- ASME safety valves
- Tank pressure gauge
- Hour meter
- Large fly wheel
- Intake filter/silencer
- Tank shut-off valve



M Series Simplex | Two Stage Electric

80 & 120-Gallon Horizontal & Vertical



Horizontal Models

Model Number	HP	Tank Size	Pump RPM	Voltage/Amperage/Phase	CFM Delivered @ 175 PSI	Dimensions (LxWxH)	Bolt Down Dimensions (LxW)	Ship Wt.	Net Wt.
ACS-23105-80HM	5.0	80-gallon	860	230V, 23.0A, 1 Phase	18.0	52x26.5x53in.	20.75x23.5in.	615 lb.	544 lb.
ACS-20305-80HM	5.0	80-gallon	860	200V, 16.1A, 3 Phase	18.0	52x26.5x53in.	20.75x23.5in.	615 lb.	544 lb.
ACS-23305-80HM	5.0	80-gallon	860	230V, 13.8A, 3 Phase	18.0	52x26.5x53in.	20.75x23.5in.	615 lb.	544 lb.
ACS-46305-80HM	5.0	80-gallon	860	460V, 6.9A, 3 Phase	18.0	52x26.5x53in.	20.75x23.5in.	615 lb.	544 lb.
ACS-23175-80HM	7.5	80-gallon	1250	230V, 31.0A, 1 Phase	23.5	52x26.5x53in.	20.75x23.5in.	780 lb.	709 lb.
ACS-20375-80HM	7.5	80-gallon	1250	200V, 23.0A, 3 Phase	23.5	52x26.5x53in.	20.75x23.5in.	780 lb.	709 lb.
ACS-23375-80HM	7.5	80-gallon	1250	230V, 20.0A, 3 Phase	23.5	52x26.5x53in.	20.75x23.5in.	780 lb.	709 lb.
ACS-46375-80HM	7.5	80-gallon	1250	460V, 10.0A, 3 Phase	23.5	52x26.5x53in.	20.75x23.5in.	780 lb.	709 lb.
ADS-23110-120HM	10.0	120-gallon	990	230V, 39.0A, 1 Phase	34.2	74x26.5x58in.	34.5x23.5in.	890 lb.	811 lb.
ADS-20310-120HM	10.0	120-gallon	990	200V, 30.8A, 3 Phase	34.2	74x26.5x58in.	34.5x23.5in.	890 lb.	811 lb.
ADS-23310-120HM	10.0	120-gallon	990	230V, 26.8A, 3 Phase	34.2	74x26.5x58in.	34.5x23.5in.	890 lb.	811 lb.
ADS-46310-120HM	10.0	120-gallon	990	460V, 13.4A, 3 Phase	34.2	74x26.5x58in.	34.5x23.5in.	890 lb.	811 lb.
AES-20315-120HM	15.0	120-gallon	990	200V, 44.0A, 3 Phase	46.5	74x26.5x58in.	34.5x23.5in.	935 lb.	856 lb.
AES-23315-120HM	15.0	120-gallon	990	230V, 38.0A, 3 Phase	46.5	74x26.5x58in.	34.5x23.5in.	935 lb.	856 lb.
AES-46315-120HM	15.0	120-gallon	990	460V, 19.0A, 3 Phase	46.5	74x26.5x58in.	34.5x23.5in.	935 lb.	856 lb.

Vertical Models

Model Number	HP	Tank Size	Pump RPM	Voltage/Amperage/Phase	CFM Delivered @ 175 PSI	Dimensions (LxWxH)	Bolt Down Dimensions (LxW)	Ship Wt.	Net Wt.
ACS-23105-80VM	5.0	80-gallon	860	230V, 23.0A, 1 Phase	18.0	33x25x73in.	15.63x15.63in.	695 lb.	544 lb.
ACS-20305-80VM	5.0	80-gallon	860	200V, 16.1A, 3 Phase	18.0	33x25x73in.	15.63x15.63in.	695 lb.	544 lb.
ACS-23305-80VM	5.0	80-gallon	860	230V, 13.8A, 3 Phase	18.0	33x25x73in.	15.63x15.63in.	695 lb.	544 lb.
ACS-46305-80VM	5.0	80-gallon	860	460V, 6.9A, 3 Phase	18.0	33x25x73in.	15.63x15.63in.	695 lb.	544 lb.
ACS-23175-80VM	7.5	80-gallon	1250	230V, 31.0A, 1 Phase	23.5	33x25x73in.	15.63x15.63in.	780 lb.	709 lb.
ACS-20375-80VM	7.5	80-gallon	1250	200V, 23.0A, 3 Phase	23.5	33x25x73in.	15.63x15.63in.	780 lb.	709 lb.
ACS-23375-80VM	7.5	80-gallon	1250	230V, 20.0A, 3 Phase	23.5	33x25x73in.	15.63x15.63in.	780 lb.	709 lb.
ACS-46375-80VM	7.5	80-gallon	1250	460V, 10.0A, 3 Phase	23.5	33x25x73in.	15.63x15.63in.	780 lb.	709 lb.

Accessories:

Part Number	Description	Fits Models
3-0312	Pump - Replacement pump	ACS horizontal & vertical models
3-0313	Pump - Replacement pump	ADS models
3-0314	Pump - Replacement pump	AES models

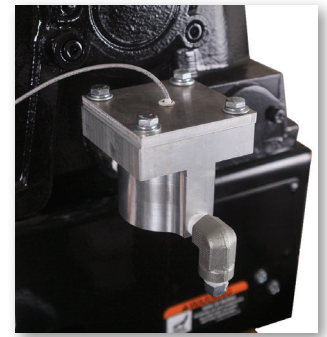
M Series | Standard Features



These standard features are what sets the M Series air compressors apart from our standard line-up.



Air-cooled after cooler removes up to 65% of moisture and drops temperature within 10°F of ambient



Low oil sensor does not allow unit to start when oil levels fall below an adequate level



Vibration isolator pads protect the tank from stress



Tank drain automatically drains liquid from the air receiver

ACS-23105-80VM